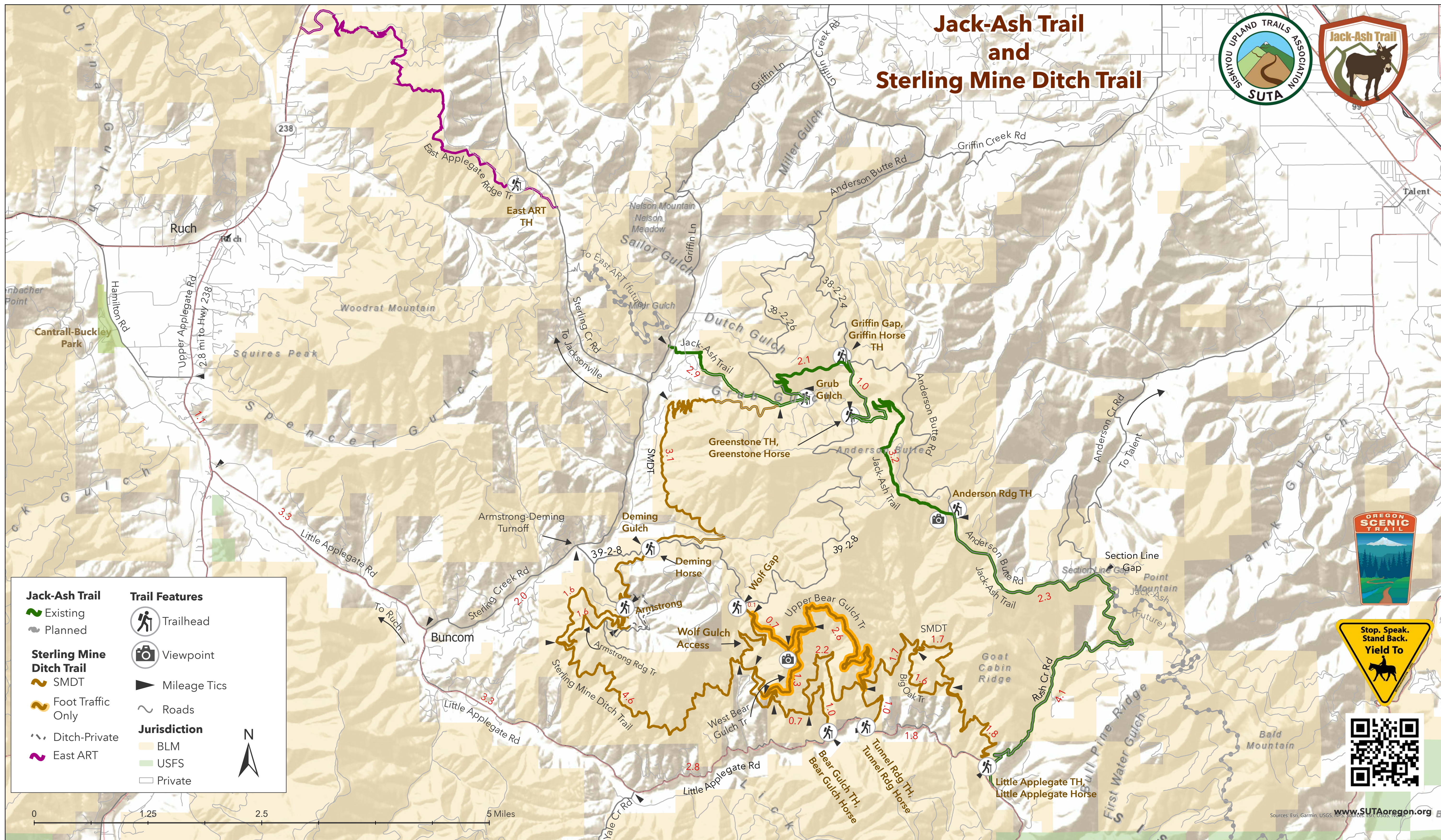


Jack-Ash Trail and Sterling Mine Ditch Trail



Jack-Ash Trail		Trail Features	
	Existing		Trailhead
	Planned		Viewpoint
Sterling Mine Ditch Trail			Mileage Tics
	SMDT		Roads
	Foot Traffic Only	Jurisdiction	
	Ditch-Private		BLM
	East ART		USFS
			Private

No warranty is made by the BLM or SUTA as to the accuracy, reliability, or completeness for individual or aggregate use with other data. Original data were compiled from various sources and may be updated without notification.

Please note: All existing roads are multi-use and are open to motorized use. All single-track trails in the SMDT and Jack-Ash systems are non-motorized use only.

20251221_SUTA_Kiosk_Map_color.aprx AMP

All trails are maintained by volunteers. Please consider joining us for a work party. See website for schedule. www.sutaoregon.org